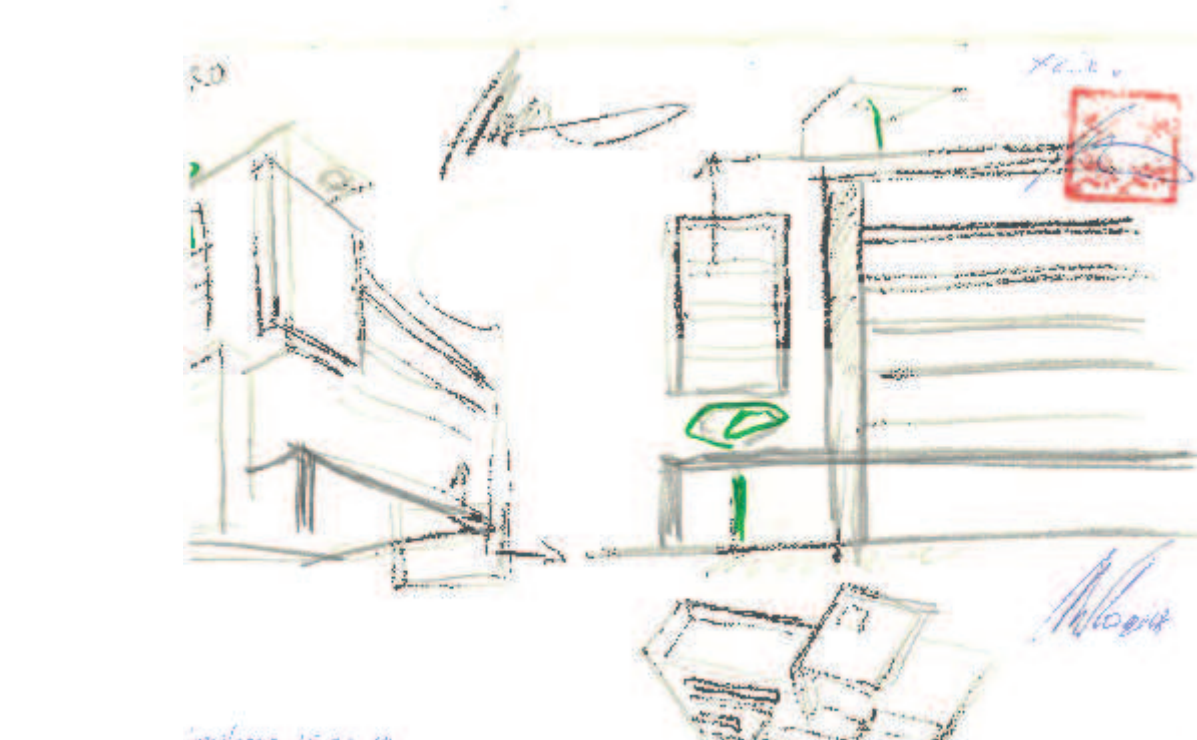
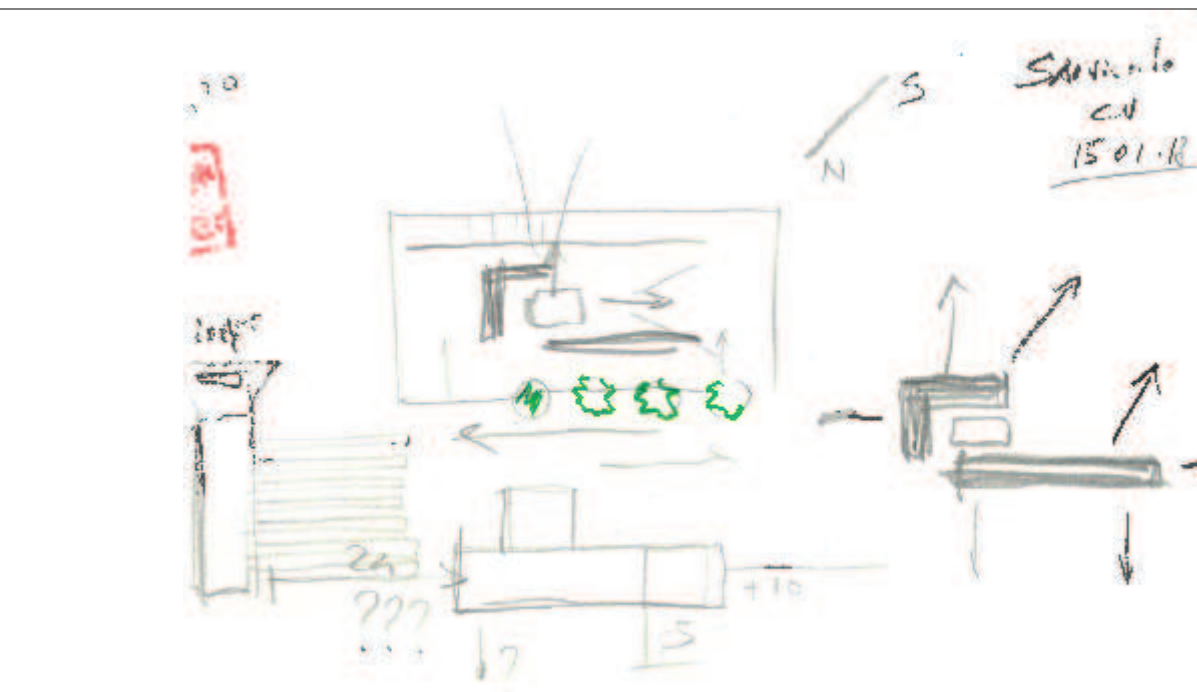


P. A. C. denominato Platanos.
Progetto di ristrutturazione ed ampliamento
previo la demolizione dei fabbricati esistenti
per l'ottenimento di 16 unità abitative

TAVOLA 0.2
Calcolo del volume stato di fatto
UBICAZIONE: Foglio 44, Zona Omogenea B1, Mappale 398 - 401 - 403 - 404
RIFERIMENTI: L. R. 19 del 19-11-2009
PROGETTISTA: Mauro Rossetto architetto
COMMITTENTE: PLATANOS S.r.l.
P. IVA 0511730336

Mauro Rossetto architetto
piazza Saveriano, 3
33060 Marano Lagunare - Udine -
info@maurorossetto.com
P. IVA 0511730336
L. 0431_040415 - F. 0431_040772
tel. 339_1015712
c.f. RSS MRA 66009 L483W
p. no 01869370302

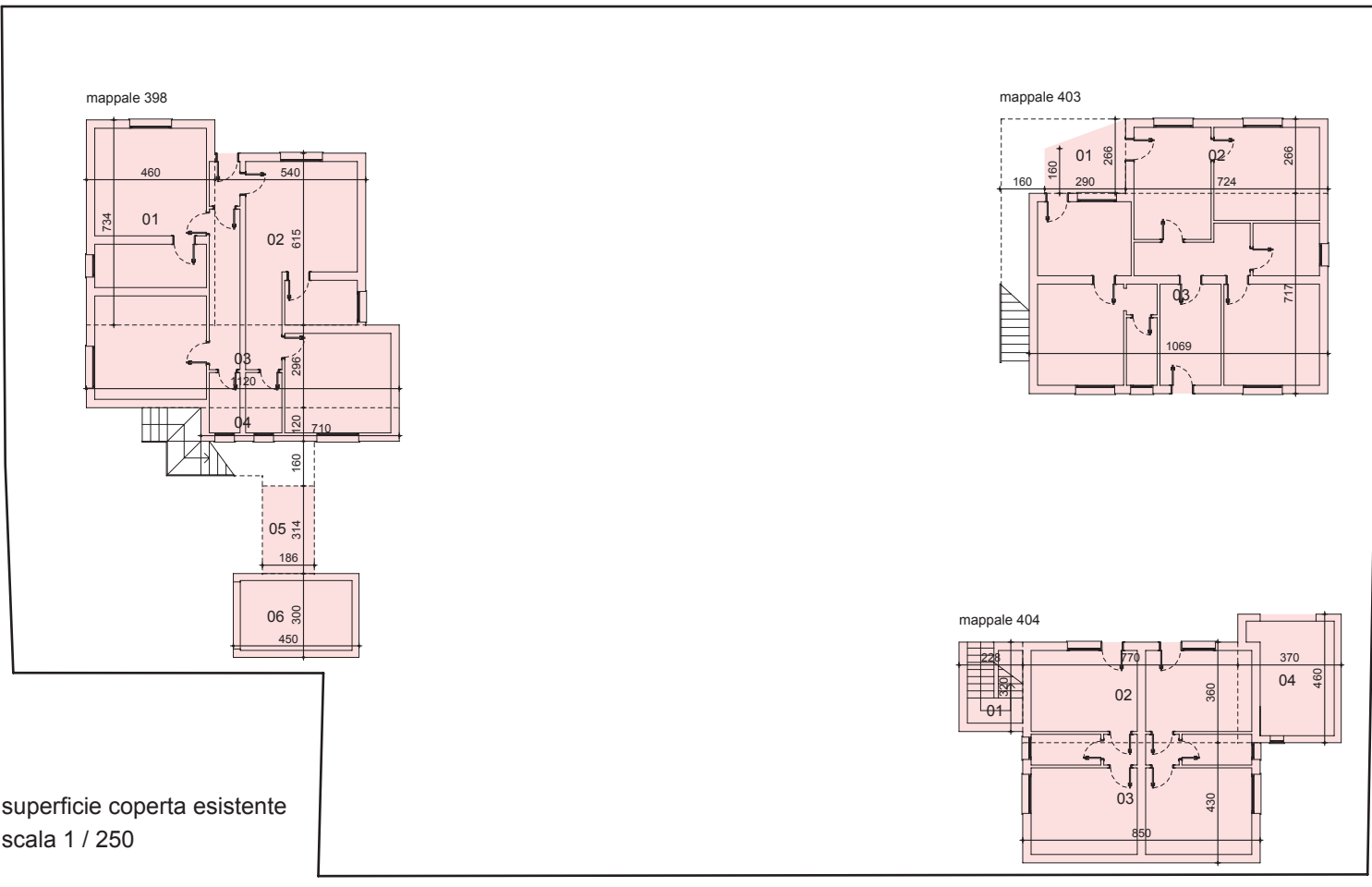
Il progettista si riserva a termine di legge (art. 2575 CC) la proprietà del seguente disegno con divieto di riprodurlo o di renderlo noto a terzi senza la sua approvazione



Calcolo del volume massimo realizzabile

Table with columns: Mappale, Volume mc, Unità immobiliari, Totale unità immobiliari, Volume massimo realizzabile.

Table with columns: Identificativo u. esistente, volume mc, bonus mc, volume totale, corrispondente u. nuova, volume nuova u. i.



superficie coperta esistente
scala 1 / 250

calcolo sup. coperta stato di fatto

Table for map 404 - UNITA' 01 - piano terra showing room areas and surface calculations.

Table for map 403 showing room areas and surface calculations.

totale sup. coperta stato di fatto
(88.586 + 102.882 + 127.886) = 319.354 mq

Table for map 404 - UNITA' 01 - piano terra showing room dimensions and calculations.

VOLUME UNITA' 01 (26,87 x 2,80) = 75,236 mc

Table for map 404 - UNITA' 02 - piano terra showing room dimensions and calculations.

VOLUME UNITA' 02 (26,87 x 2,80) = 75,236 mc

Table for map 404 - UNITA' 03 - piano primo showing room dimensions and calculations.

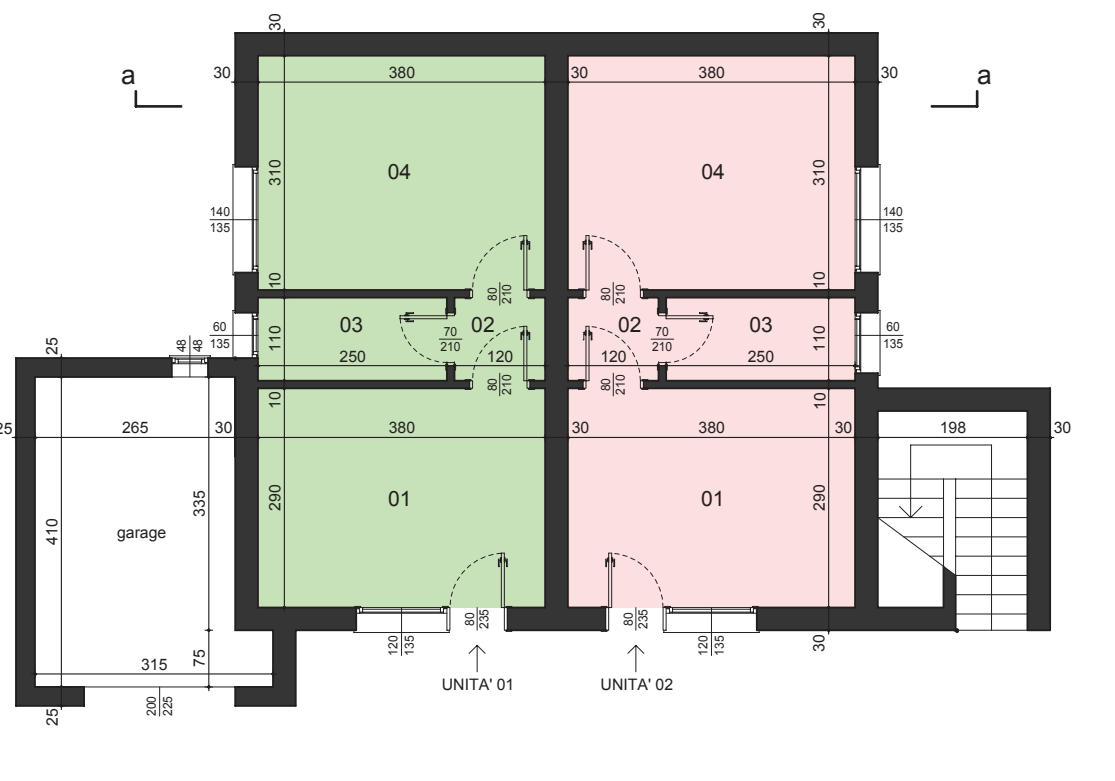
VOLUME UNITA' 03 (64,977 x 2,80) = 181,9356 mc

Table for map 404 - UNITA' 04 - piano secondo showing room dimensions and calculations.

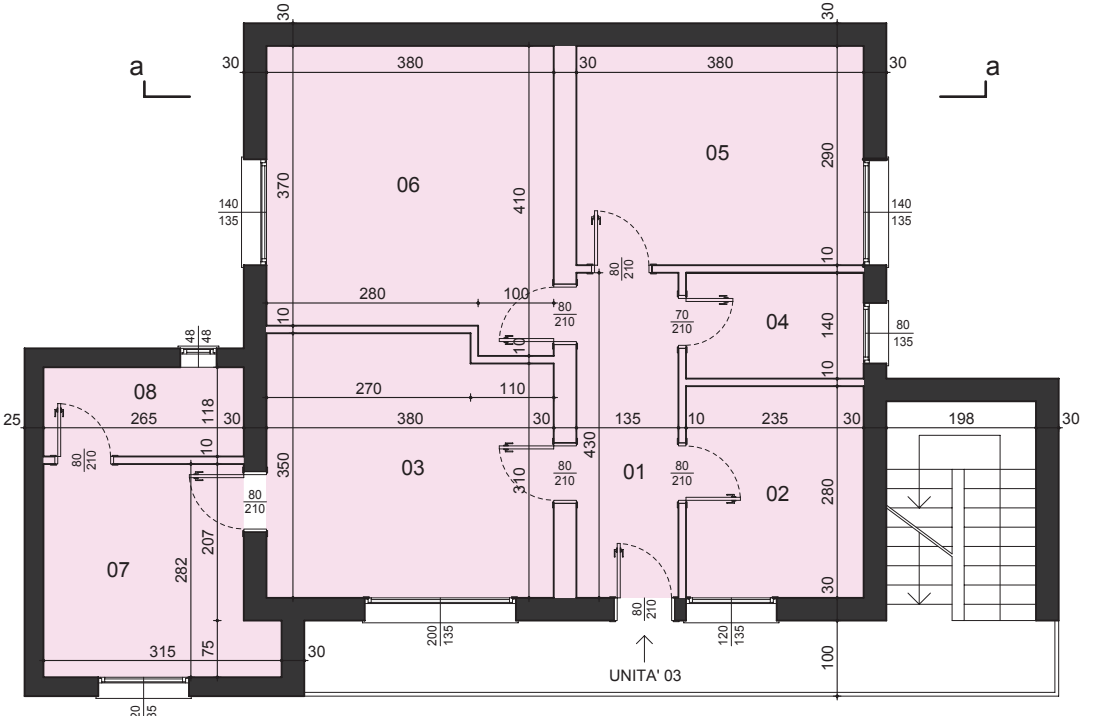
VOLUME UNITA' 04 (26,87 x 2,80) = 75,236 mc

Table for map 404 - UNITA' 05 - piano secondo showing room dimensions and calculations.

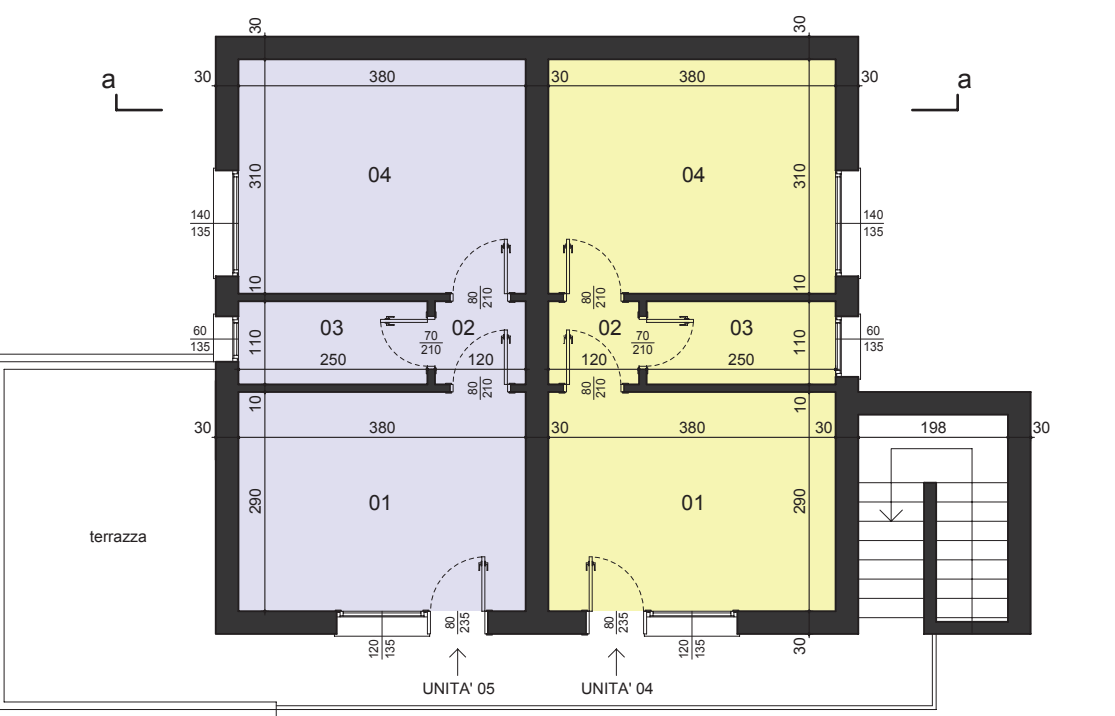
VOLUME UNITA' 05 (26,87 x 2,80) = 75,236 mc



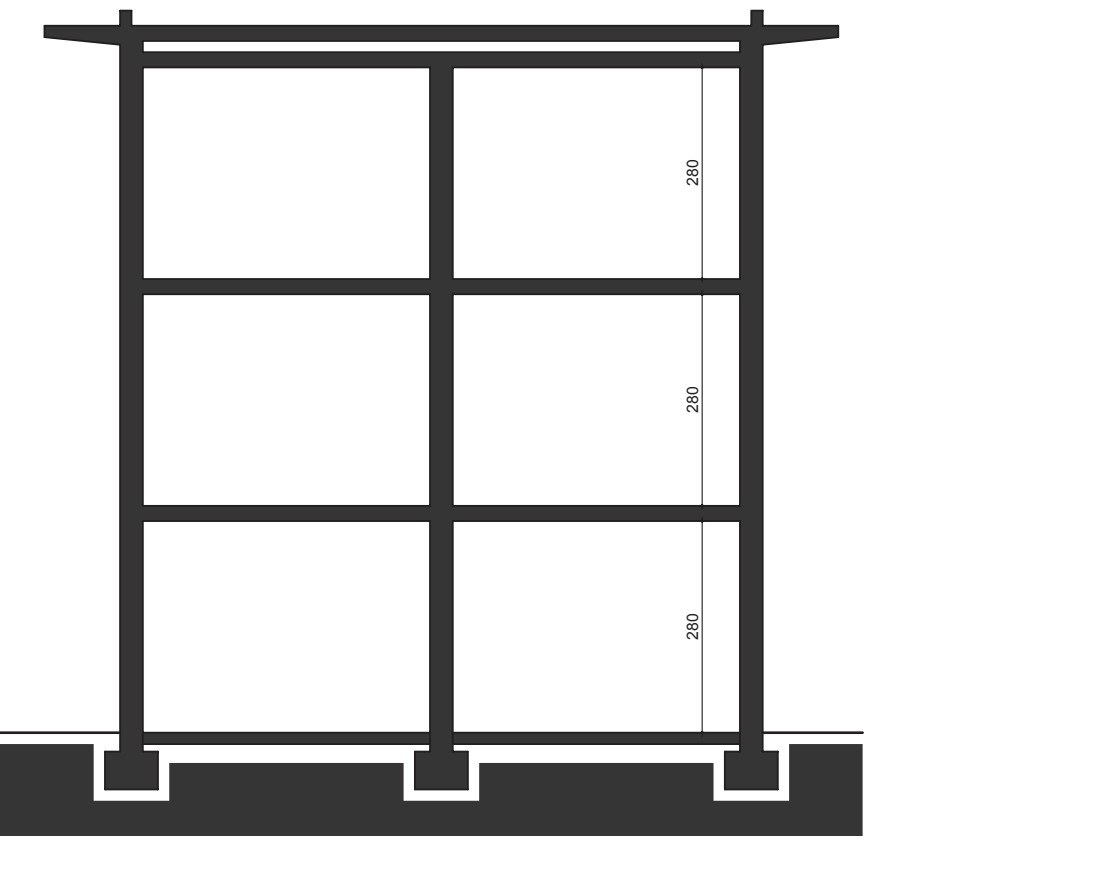
PIANO TERRA - mappale 404



PIANO PRIMO - mappale 404



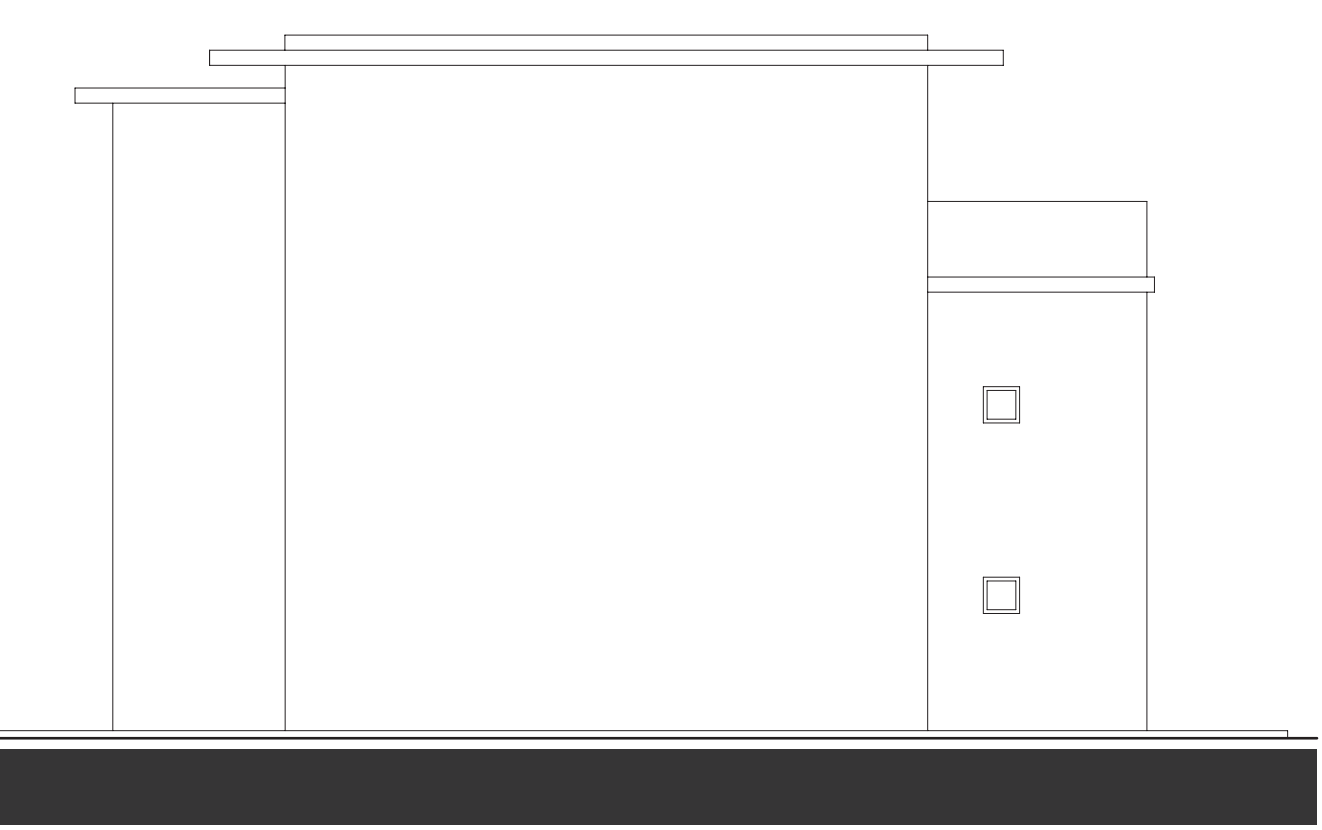
PIANO SECONDO



SEZIONE a / a - mappale 404



PROSPETTO NORD - mappale 404



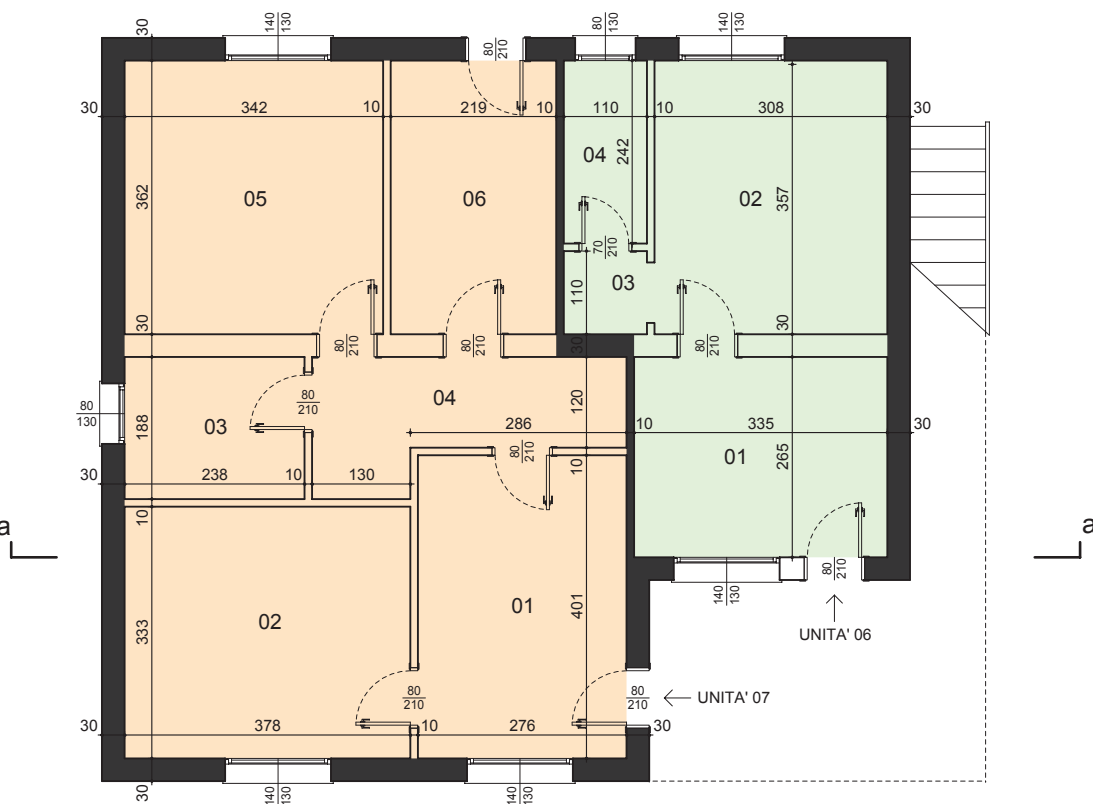
PROSPETTO SUD - mappale 404



PROSPETTO EST - mappale 404



PROSPETTO OVEST - mappale 404



PIANO TERRA - mappale 403

Table for map 403 - UNITA' 06 - piano terra showing room dimensions and calculations.

VOLUME UNITA' 06 (23,691 x 2,73) = 64,676 mc

Table for map 403 - UNITA' 07 - piano terra showing room dimensions and calculations.

VOLUME UNITA' 07 (54,313 x 2,73) = 148,274mc

Table for map 403 - UNITA' 08 - piano primo showing room dimensions and calculations.

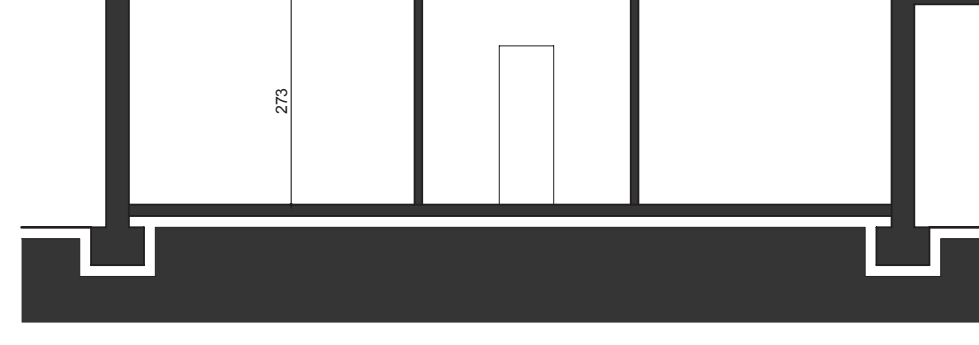
VOLUME UNITA' 08 (30,032 x 2,78) = 83,488

Table for map 403 - UNITA' 09 - piano primo showing room dimensions and calculations.

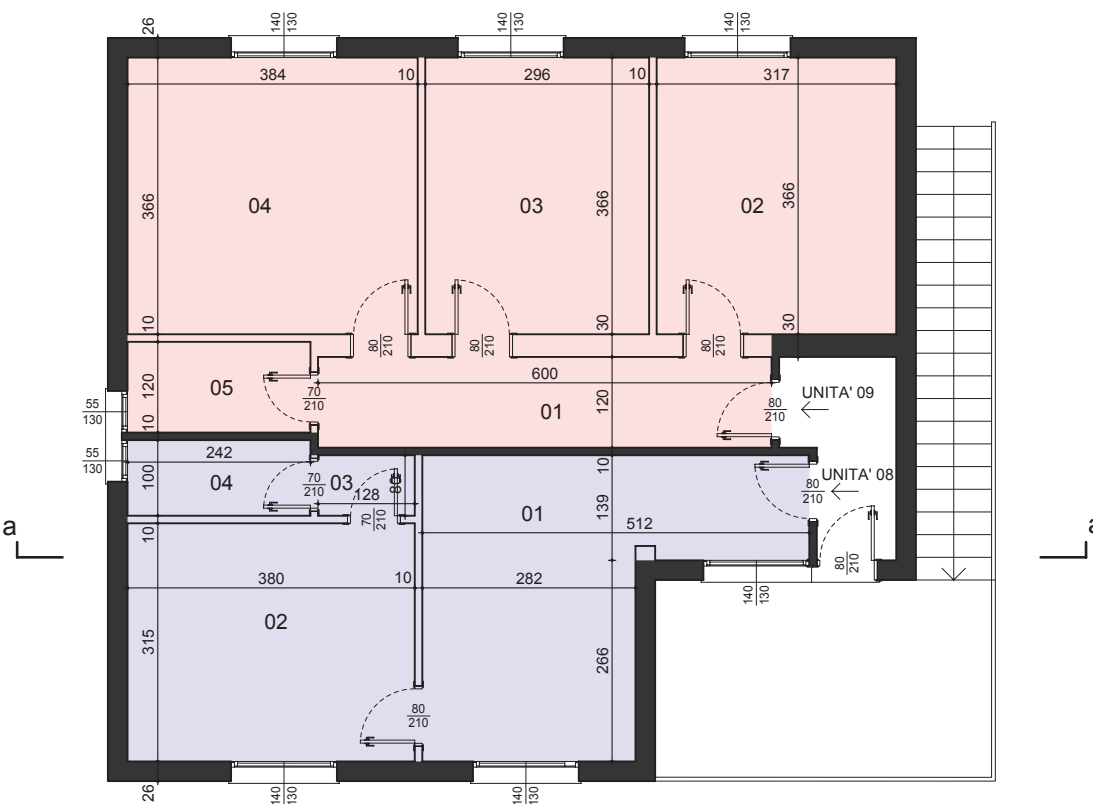
VOLUME UNITA' 09 (40,503 x 2,78) = 126,748

Table for map 403 - UNITA' 10 - piano primo showing room dimensions and calculations.

VOLUME UNITA' 10 (45,101 x 3,20) = 144,3232 mc



SEZIONE a / a - mappale 403



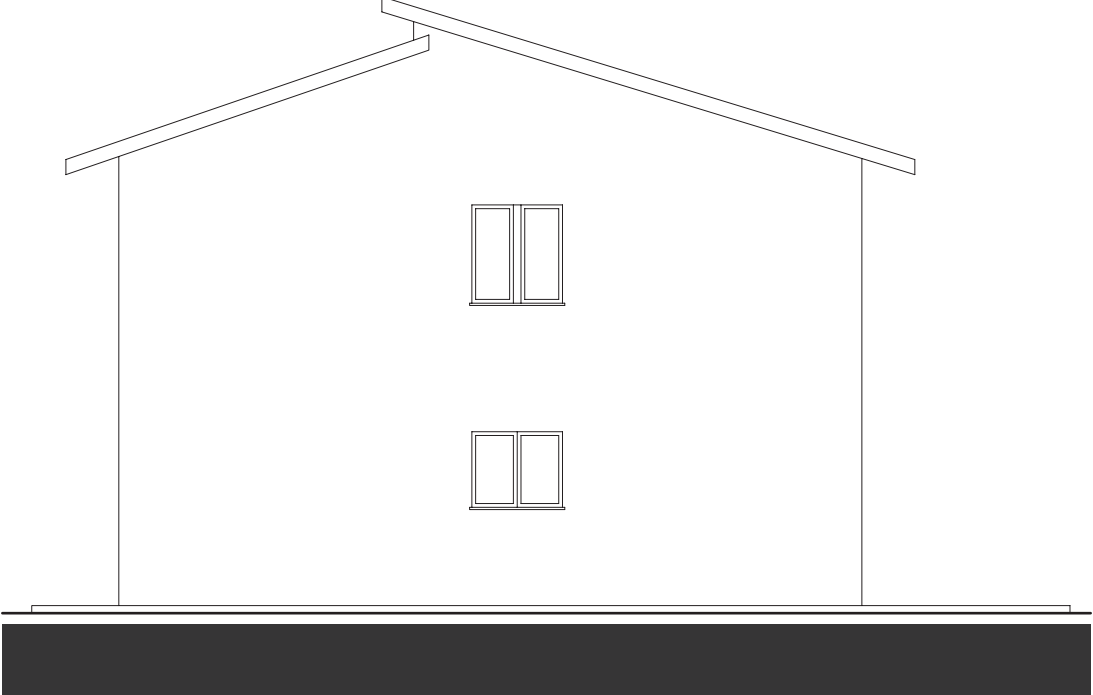
PIANO PRIMO - mappali 403



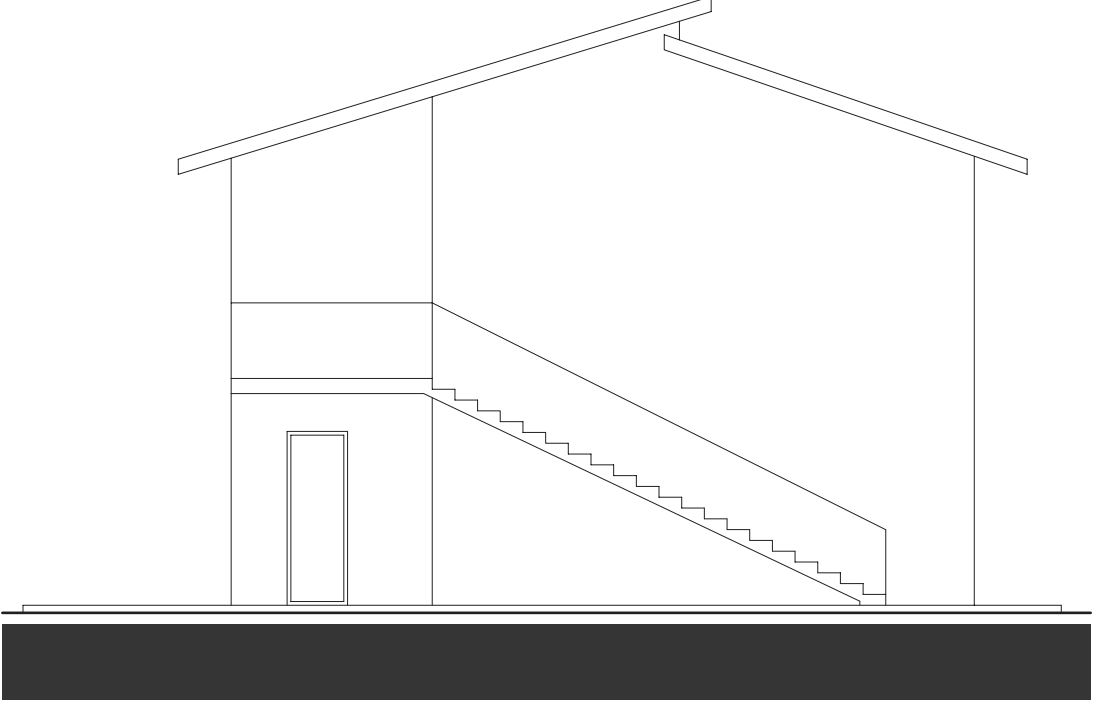
PROSPETTO SUD - mappale 403



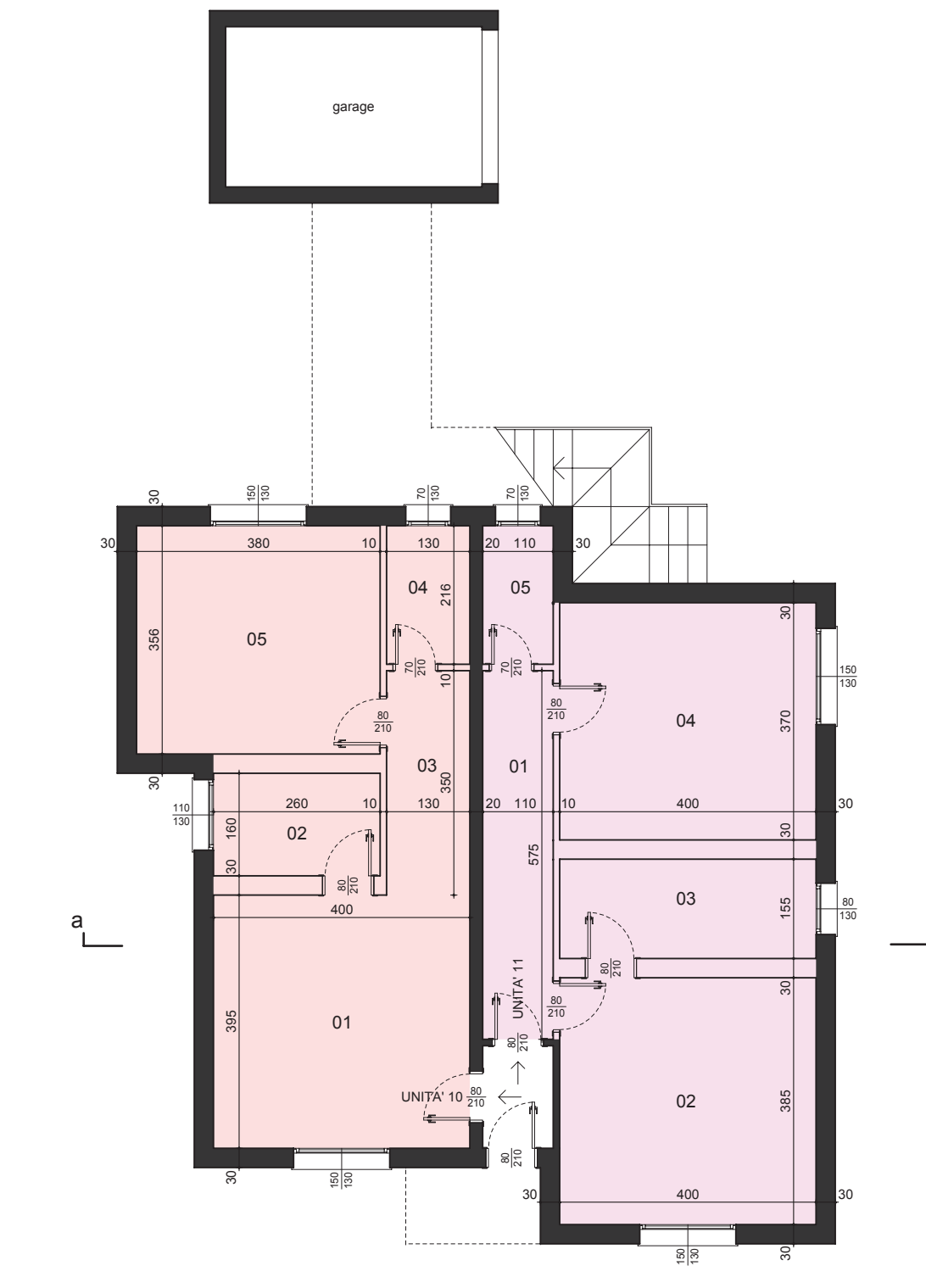
PROSPETTO NORD - mappale 403



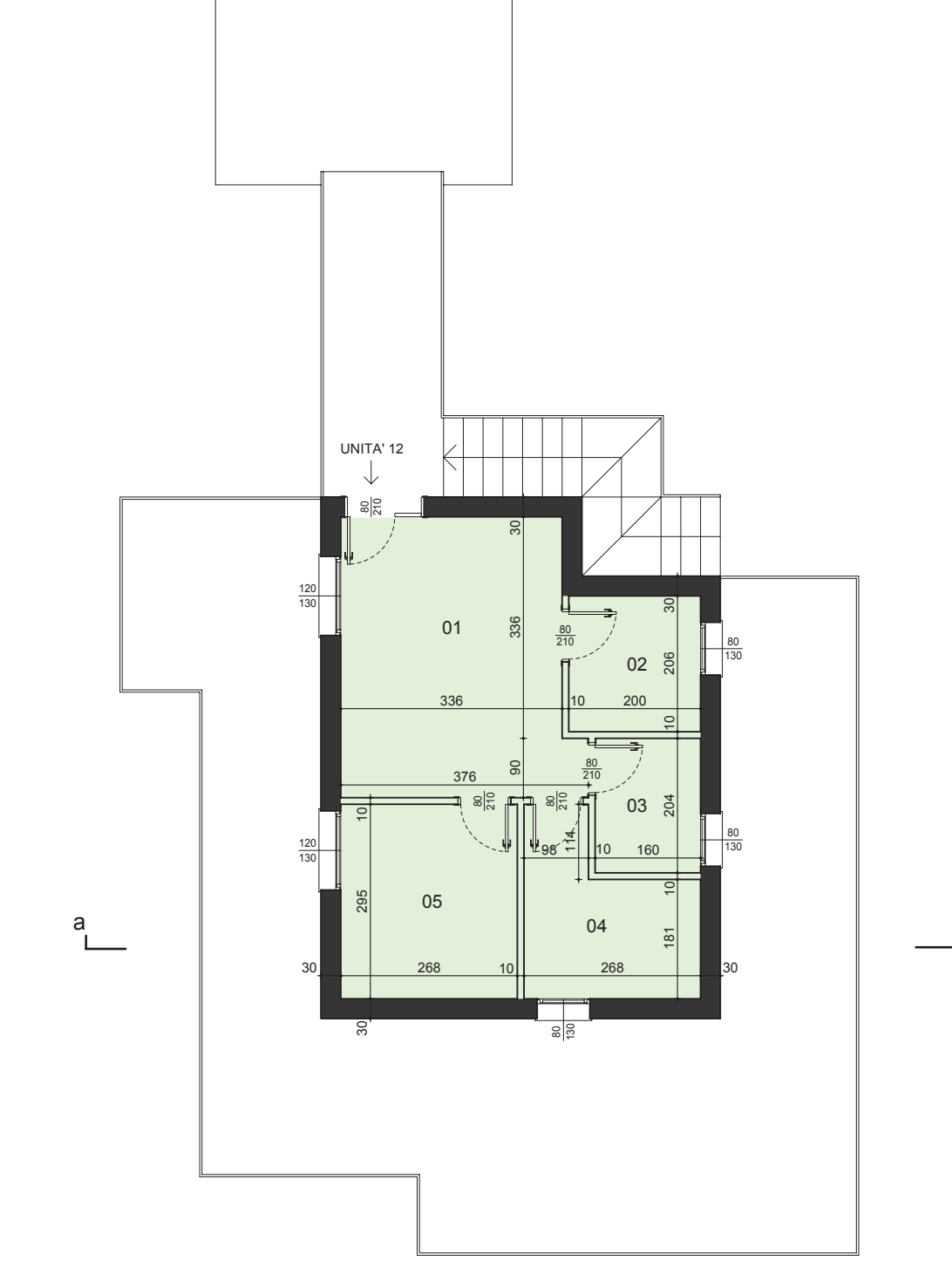
PROSPETTO EST - mappale 403



PROSPETTO OVEST - mappale 403



PIANO TERRA - mappale 398



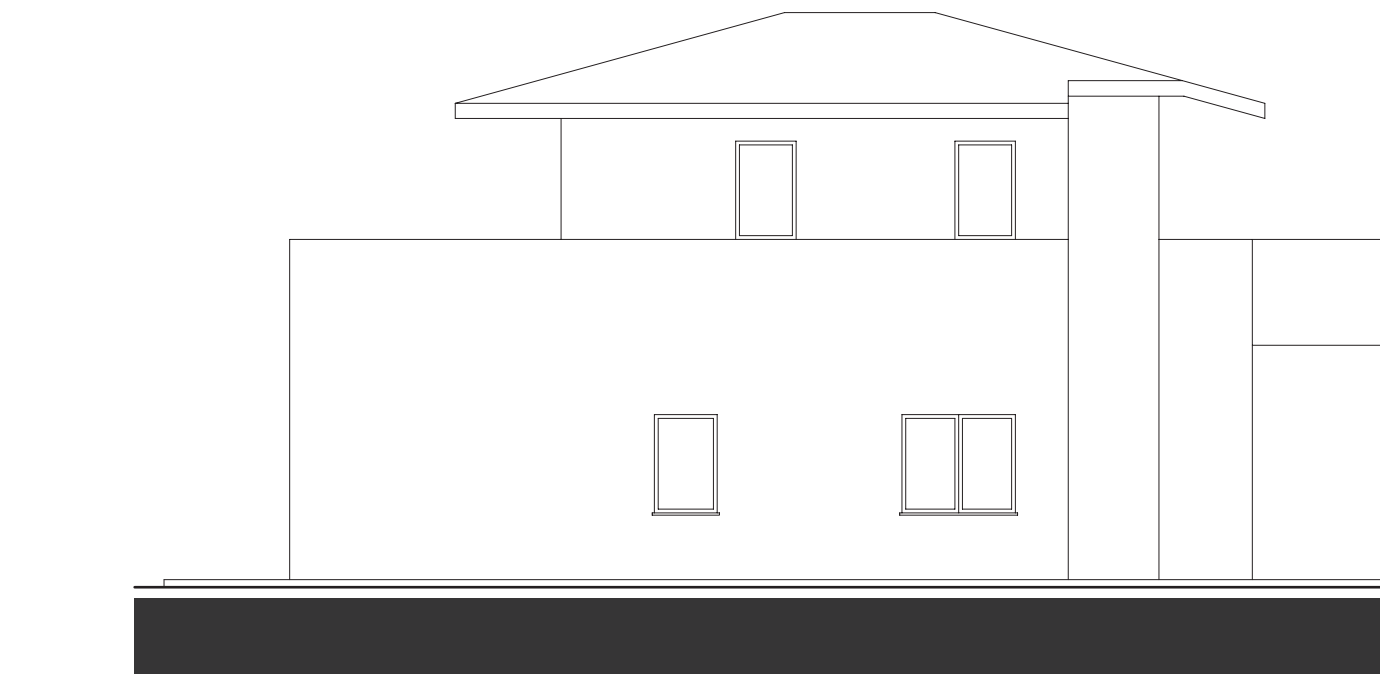
PIANO PRIMO - mappale 398

Table for map 398 - UNITA' 09 - piano terra showing room dimensions and calculations.

VOLUME UNITA' 09 (40,846 x 3,20) = 130,7072 mc

Table for map 398 - UNITA' 10 - piano terra showing room dimensions and calculations.

VOLUME UNITA' 10 (45,101 x 3,20) = 144,3232 mc



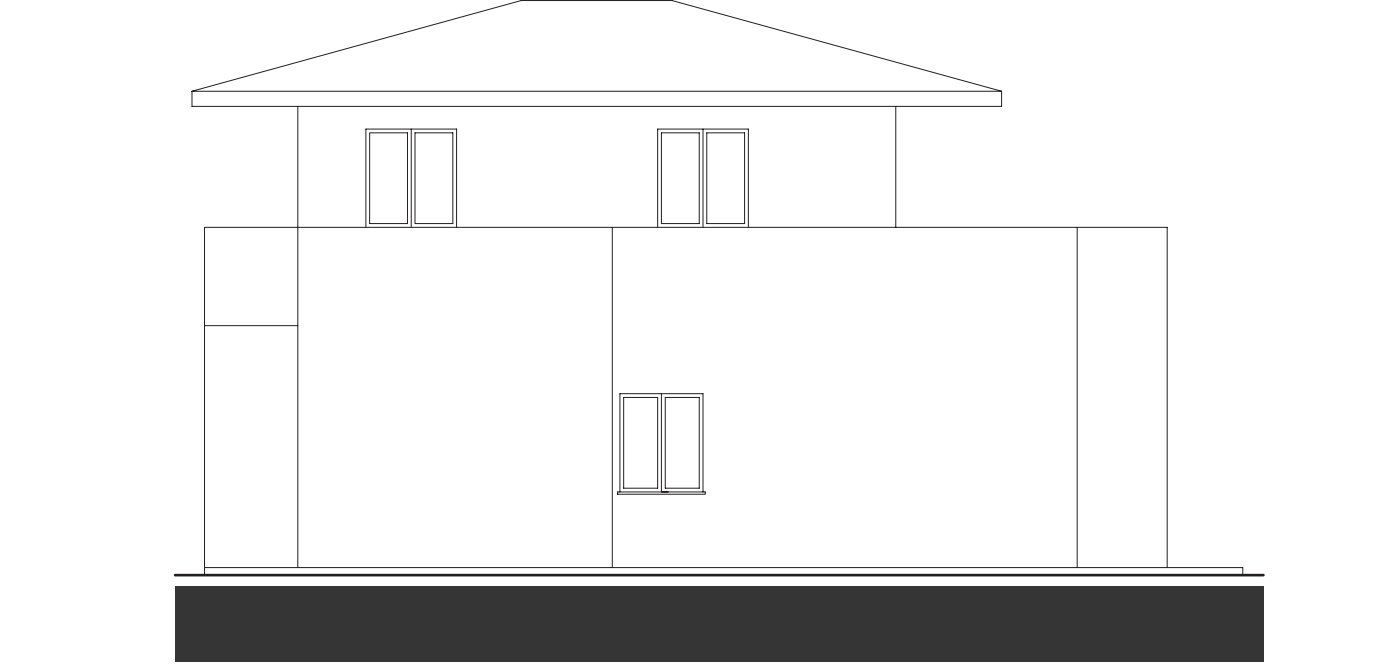
PROSPETTO EST - mappale 398



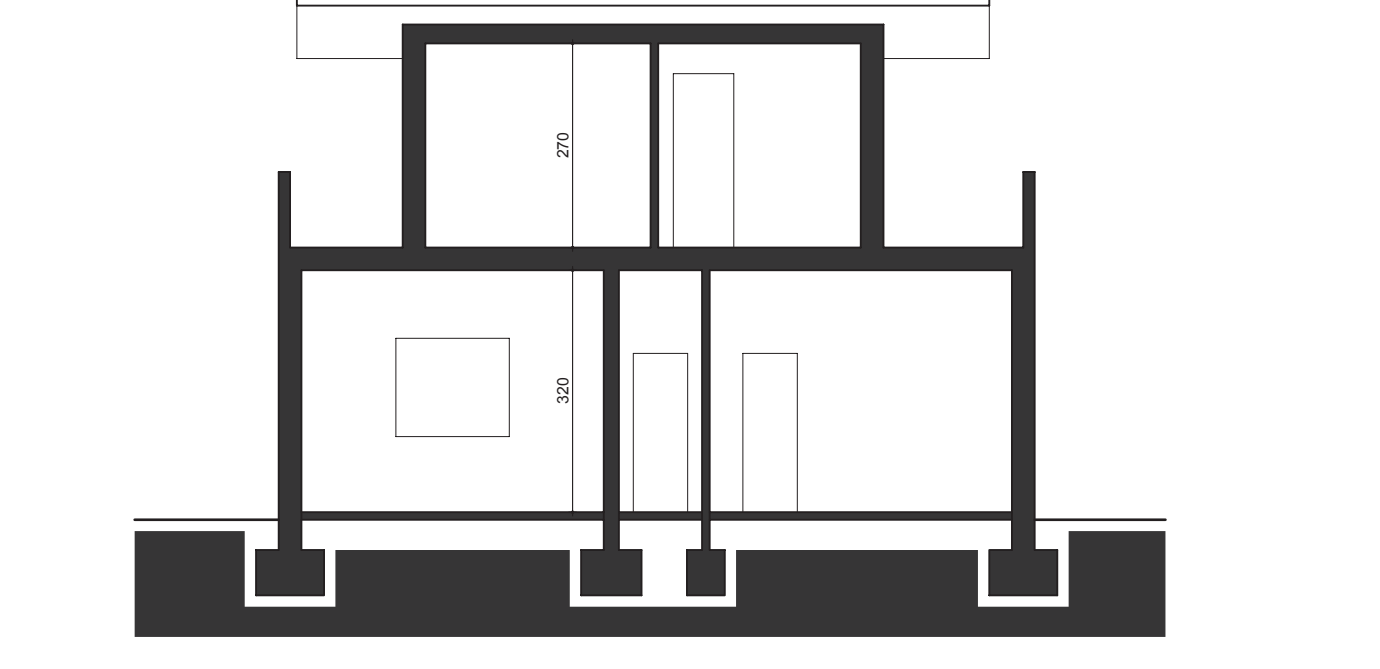
PROSPETTO SUD - mappale 398



PROSPETTO NORD - mappale 398



PROSPETTO OVEST - mappale 398



SEZIONE a / a - mappale 398

Table for map 398 - UNITA' 11 - piano primo showing room dimensions and calculations.

VOLUME UNITA' 11 (35,9316 x 2,70) = 97,01532 mc